

ABSORBENT
SPECIALTY PRODUCTS
TOGETHER WITH
Dodge

IMPROVE THE PROCESS
SOLUTIONS FOR
DONOR RECONSTRUCTION



www.dodgeco.com



POOR RECOVERY TECHNIQUES...



Incorrect artery tie-off



Careless skin recovery



Careless scalpel



Snipped arteries

RESULTS IN DIFFICULT RECONSTRUCTION



5 extra hours of processing due to poor recovery



Hours of unnecessary exposure to chemicals



Extra supplies needed



Higher costs



Leakage liability



A disappointed family can lead to a bad reputation & reduced donor support

RECOGNIZING PROBLEMS

SOLUTIONS

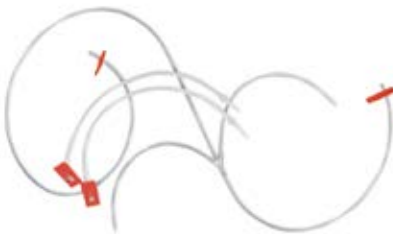
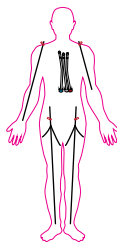


DodgeSorb

Leakage is a major liability concern for funeral homes. Our complete line of DodgeSorb products:

- **Gel** fluids
- Prevent seepage, leaks & discharge
- Absorbs up to **300x's**
- Multiple styles available

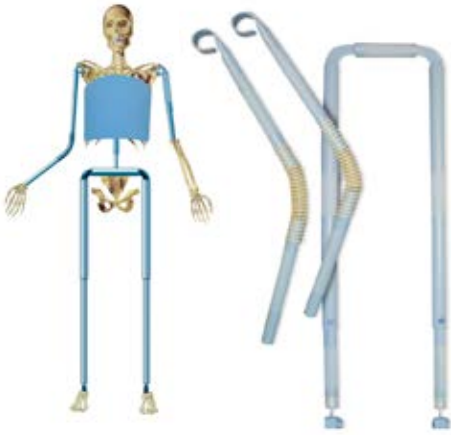
Available: Powder, Filler, Garments & More



ARTIFICIAL ARTERIES

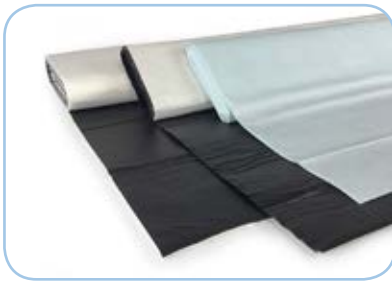
- Replaces donor arteries for **easy embalming**
- Simply inject solution into exposed tube ends/holes in tubing equally disperses embalming solution throughout extremities
- **Saves time** with no need to re-open and re-close the donor
- Reduces exposure time to hazardous chemicals
- Includes DodgeSorb absorbent pads, converting fluid to gel to prevent leakage

SOLUTIONS



BIO-BONES

- **Biodegradable** bone replacement prosthetics
- Molded for a better fit
- Easily and quickly adjusts to size with **slide & twist lock** design
- Provides rigidity & fills voids
- Turns to ash in retort (doesn't melt)
- No sharps or hazards



Additional Supplies:

- Highly absorbent mats for skin donation
- Floor pads for **easy clean up**

DONOR SYSTEM

THE PROCESS AND HOW IT WORKS

DodgeSorb **ARTIFICIAL ARTERIES** **BIO-BONES**



The Process:

Recovery:

- Perform standard recovery
- Insert DodgeSorb absorbents
- Insert Artificial Arteries
- Insert Bio-Bones prosthetics
- Perform final closure

Embalmer:

- Inject solution into Artificial Artery tube ends
- Continue as normal



*Ready to go donor packs are custom designed & can include **DodgeSorb, Artificial Arteries, Bio-Bones & more.***

The Benefits of using the DONOR SYSTEM:



Speeds & eases reconstruction for funeral home



Reduces chemical exposure to embalmer



Improves relationship between funeral home and recovery agency



Increases donations with funeral home support



Decreases the waiting time for recipients



Saves Lives!



Creates a full circle solution...
Benefits all parties!

Organ
& Tissue

Dodge

Embalmers
& Funeral
Homes

BRIDGING THE GAP

Support • Training • Techniques • Q&A
Mortuary & Embalming Supplies

Why it's Important:

1:8 1 donor can save the
lives of 8 people

Every **10** minutes, someone is added
to the transplant wait list

114K+ Waiting for a life
saving transplant

Only **21K+** Total transplants
since January 1, 2018*

7K+ **Died** in 2016,
waiting. That's
20 people a day.

*As of July 31, 2018



**Do your part &
help save a life**